



**Responsible choice:**  
we use 100% recycled paper.

# Let's meet.

aralab@aralab.pt  
+351 219 154 960

aralab.pt

Copyright© Aralab 2026. All rights reserved

in

f

@

▶

X

Follow us for our latest on Social Media

## Climatic Chambers are what we do.

### TESTING

# High- Performance- -Ready

## Because reliability is a long-lasting need.



# We are Future-Ready.

Pushing the limits of innovation.

Automotive

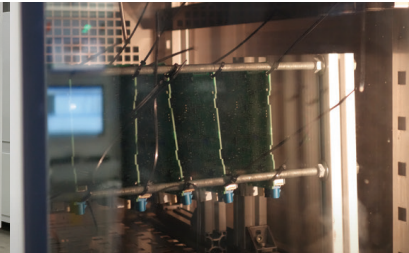
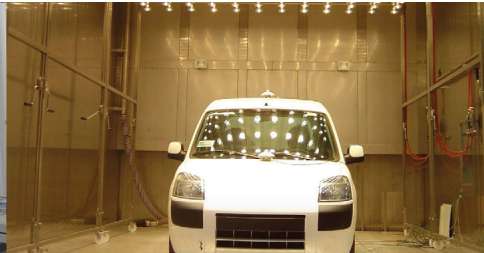
Aeronautics  
& Space

Defense  
& Railway

Electronics

Building  
Materials

Others Depending  
on Environmental  
Simulation



Combined Vibration  
And Climatic Testing

Sun Simulation  
Chambers

Metrology And Calibration  
Chambers

Temperature Shock  
Testing

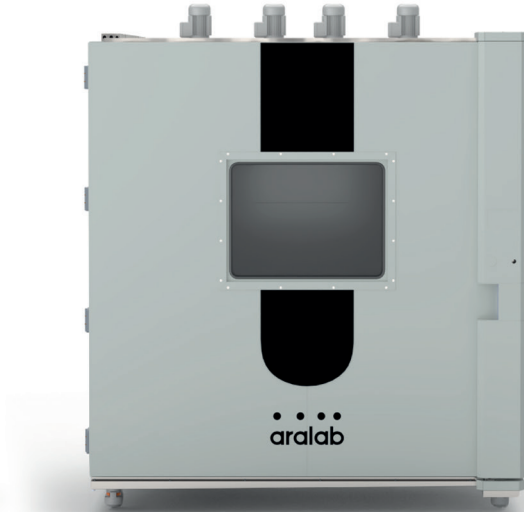
Curing

Bespoke Custom  
Solutions

# Testing Chambers



Reach-In Chambers



Walk-In Chambers

# Specifications

		TESTA_e MINI	TESTA_e REACH-INS	TESTA REACH-INS (TT or CT)	TEMPERATURE SHOCK	WALK-INS
<b>MODELS / VOLUMES</b> CT = Temperature and Humidity TT = Temperature only	☑	TT 30 E65	TT/CT 100 E/EP 70 TT/CT 1.000 E/EP 80 TT/CT 2.400 E/EP 70	TT/CT 300 E/EP/EC/ECP 50/75 TT/CT 500 E/EP/EC/ECP 50/75 TT/CT 1.000 E/EP/EC/ECP 50/75 TT/CT 1.500 E/EP/EC/ECP 50/75 TT/CT 2.000 E/EP/EC/ECP 50/60	Testa 120 TS2	Multiple solutions available, for temperature or environmental Testing. Please consult Aralab
<b>INTERNAL TEST VOLUME (Liters)</b>	📦	30	100, 200, 400, 1.000 and 2.400	300, 500, 1000, 1500 and 2000	120	From 6.000 to bespoke dimensions
<b>TEMPERATURE UNIFORMITY</b>	🌡️	± 2,0 °C	± 2,0 °C	± 1,0 °C	± 2,0 °C	± 1,0 °C
<b>TEMPERATURE RANGES °C</b>	🌡️	<b>Min</b> -65 <b>Max</b> 150	<b>Min</b> -80 <b>Max</b> 150 -70 150	<b>Min</b> -50 <b>Max</b> 180 -75 180	<b>Min</b> -80 <b>Max</b> 220	Ranges can be customized to customer requirements Please consult Aralab
<b>TEMPERATURE RATE OF CHANGE</b>						
Cooling		≥ 2 °C/min	≥ 1,8 °C/min	-3°C/min and 5°C/min as standard; 10°C/min 5°C/min as standard; and 10°C/min optional	≥ 5 °C/min	Rates of change can be customized to customer requirements Please consult Aralab
Heating		≥ 6 °C/min	≥ 5 °C/min		≥ 14 °C/min	
<b>HUMIDITY RANGES %RH</b> CT models only	💧	<b>Min</b> 25% <b>Max</b> 85%	<b>Min</b> 20% <b>Max</b> 98%	<b>Min</b> 10% <b>Max</b> 98%	N/A	Ranges can be customized to customer requirements Please consult Aralab
<b>HUMIDITY UNIFORMITY</b> CT models only	💧	± 3.0% RH (> 75% RH) ± 5.0% RH (< 75% RH)	±2.0%RH(>75%) ±5.0%RH(≤75%)	± 0,5% RH to ± 3% RH	N/A	±2.0%RH

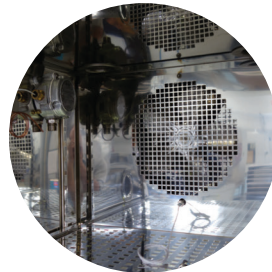
# Other Aralab Solutions



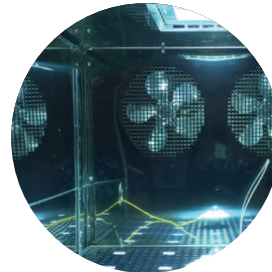
Psychrometric Rooms



Drive-In Chambers



Atex & Battery Testing



Radiation Testing

**Industries like automotive, aeronautics, space, electronics, defense, railway, building materials and many others depend on environmental simulation for a wide range of tests. If you are looking for the right partner in industry testing here is why aralab is the name to catch.**

**The most advanced technology in climate control.**

**Internal aerodynamic optimization to ensure uniformity of climatic conditions.**

**Nonpolluting construction and cooling system.**

**High performance temperature and humidity control.**

**User-friendly touch-screen interface and software developed exclusively for Aralab environmental chambers.**

**Low maintenance, reliable and accurate performance.**

**Compliant with international standards and requirements EN, IEC, DIN, ISO, NP and UNE.**

**Technical assistance and after sale care wherever you are.**

**+40 years experience in projects for different industries, cultures and geographies.**